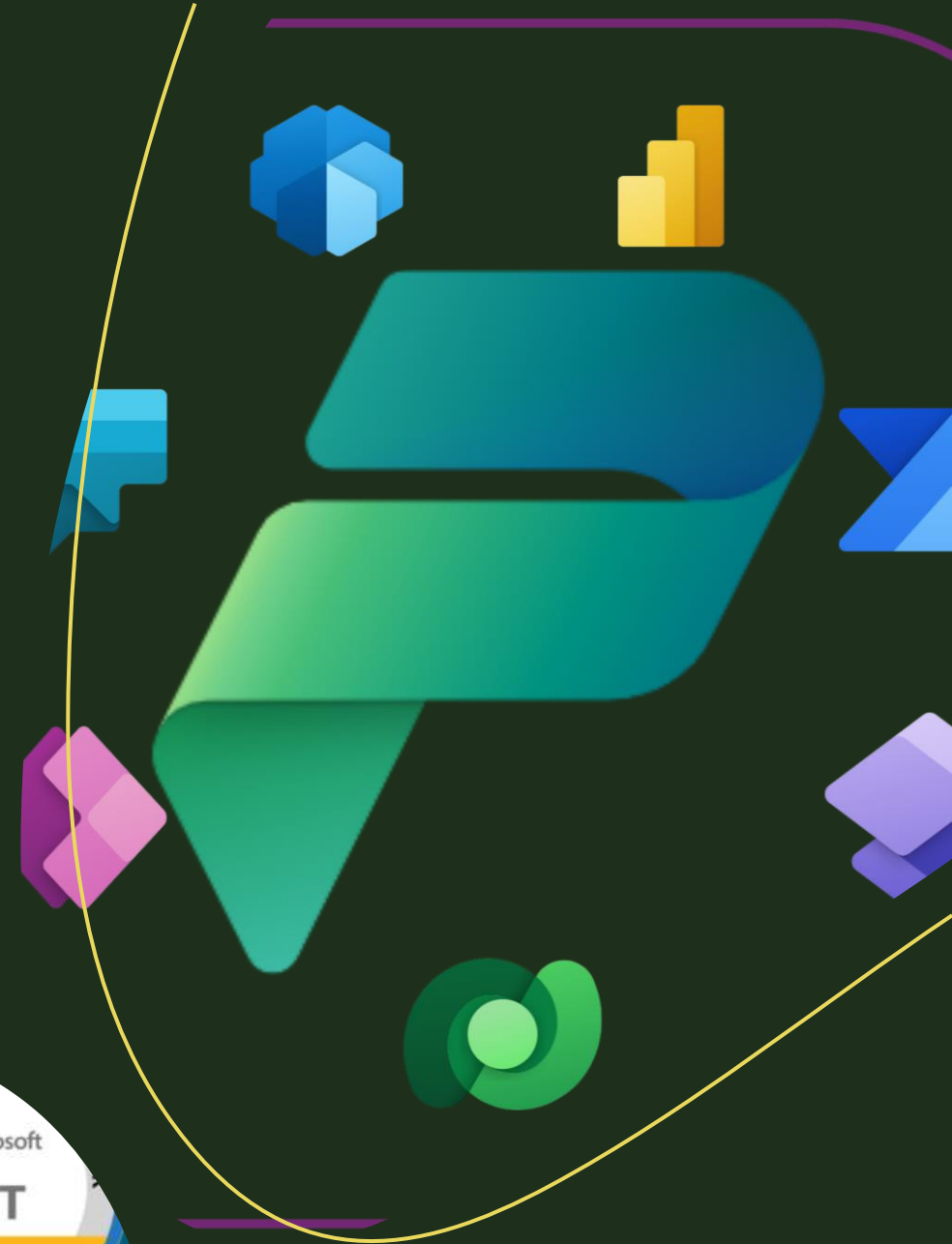




Power Platform & Dynamics 365 CE Training Syllabus

70 Hours | Weekdays | Daily 70 Mins | 60 Days

By Sanjay Prakash (MVP, MCT)





Introduction

What is Power Platform

Power Platform Ecosystem & Architecture

Join 90 Days Free Developer Program

Concept of Environments & Azure Tenants

Project Overview

ER Diagram

Working Solutions

Concept of Solution

Solution Components, Types of Component,
Publisher, Prefix, Version

Solution Types - Managed, Un-managed, Default

Solution Patch & Clone

Export, Import, Publish

Solution Layer, Merge, Top-win





Working with Dataverse



What is Dataverse & Its Features



Common Data Model



Data Modeling (Tables, Columns, Relationships)



UI Components (Forms, Views, Charts, Dashboards)



Business Rules, Alternate Keys



Security Matrix, BU, Users, Teams, Field Security,
Hierarchy Security

Power Apps

Microsoft
PowerApps



Model Driven Apps (MDA)

- Sitemap, App Design, Features, Manage Role, Global Dashboards, Advance Find, Fetch XML, Personal Views/User Views/ Default Views, Using Dataverse in MDA, Personalization Settings,
- Custom Model Driven Apps
- Microsoft Dynamics 365 CE Apps (Design, Features)
 - Sales App (Module)
 - Customer Service App

Canvas Apps

- Screens, Controls, CRUD, Delegation, Power FX, Variables, Integration, Security, Versioning, MDA v/s Canvas App, Monitor Tool, Test Studio, Responsive Concept

Custom Pages

- Intro, Design pages, Using PowerFX in Custom Page, Integration with MDA

Power Pages

Previously Power Portal

- Concept of Power Pages & Ready-made Template
- Authentication & Authorization
- Web Roles, Table Permission, Customer Record
- CRUD Operation with List, Basic Form, List Features
- Pages, Page Templates, Web Templates, HTML, CSS Usage
- Form Metadata, Form Validation using jQuery/JavaScript, Server-side Liquid code usage, Content Snippets, Weblink Sets, Header, Footer, Web Pages
- Power Page Layout Design
- Power Page Settings



Power Automate

Concept of Power Automate

Types of Power Automate

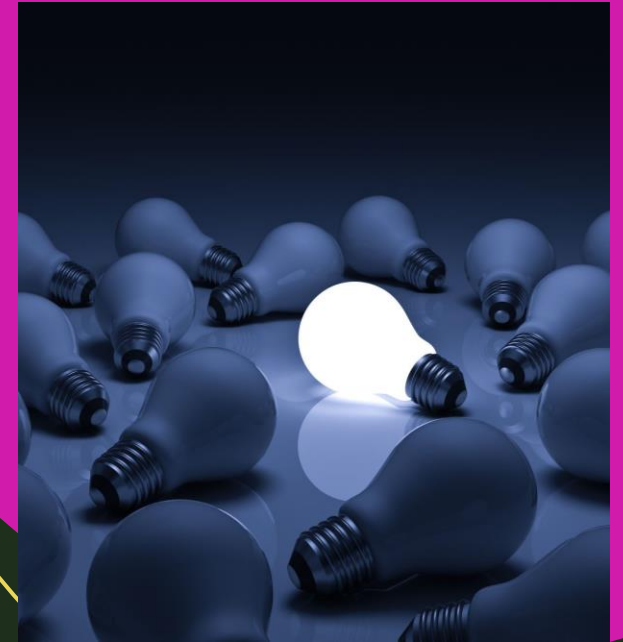
Trigger, Connector & Actions

Instant, Automated, Scheduled, Desktop Flows,

Approvals

Exception handling

Third Party integration



Power Virtual Agent



Concept of Chatbots



Topics and Trigger Phrases



Actions



Calling Flow for Integration



Deployment



Power BI



Working with Datasource



Workspaces



Power BI Online, Power BI Desktop



Reports, Visualizations, Power Query Editor



Datasets



Dashboards



Integration with Model Driven App



Publish Live

Advanced Configurations

- Duplicate Detection Rules
- Auditing
- Data Import
- Reports
- Email Templates, Signatures
- Document Template
- System Settings
- Languages



EXPORT/IMPORT
TRANSLATION



SHAREPOINT
INTEGRATION



ONEDRIVE
INTEGRATION



OUTLOOK
INTEGRATION



ONENOTE
INTEGRATION



BULK DELETION
& SYSTEM JOBS

Processes Customization & Enhancement

- Classic Workflows & System job
- Custom Action
- Business Process Flow
- Command Power FX
- Ribbon Workbench
- Web Resources
- Form Scripts+
command+workbench
- Plugins
- Custom Workflows
- Web API & Custom API



Integrations



Console App Batch Jobs



Azure Integration with Logic App, Service Bus, Queue



Working with Webhooks



Third Party Integrations using Power Automate



Third party WEB API Calls



Native Integration

Bonus Video Resources & Books (Pre-record)



WORKING WITH
DEVOPS FOR ALM



WORKING WITH PCF
COMPONENTS



WORKING WITH
RESPONSIVE CANVAS
& CUSTOM PAGES



MICROSOFT
LEARN WEBSITE



ABSOLUTE
GUIDE BOOK BY
ME



WORKING WITH
DELEGATIONS



WORKING WITH AI
FEATURES & AI
MODELS BUILDERS